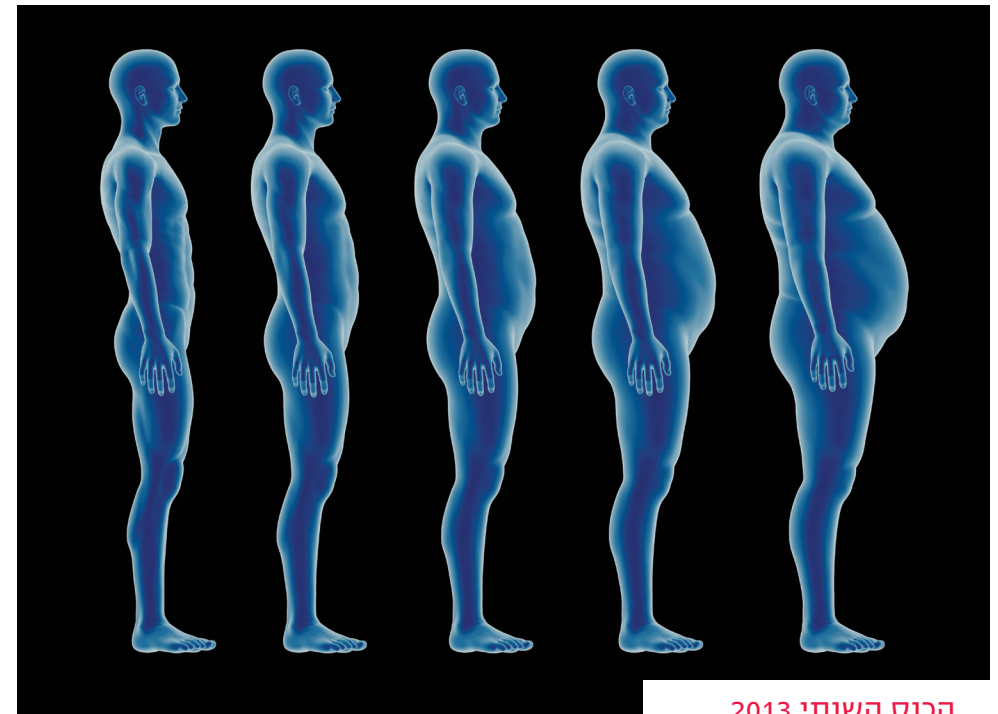


מזהמים סביבתיים, סוכרת והשמנת יתר

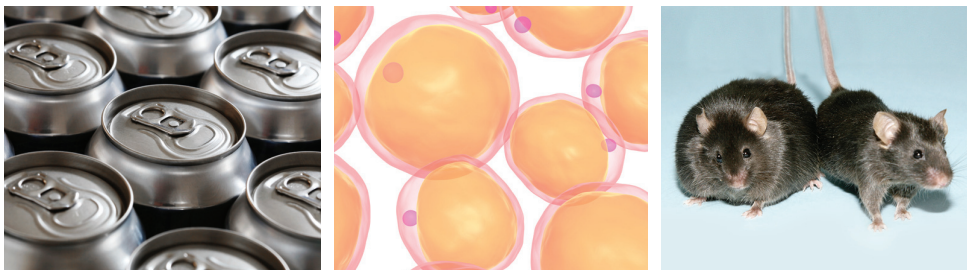
Pollutants, Diabetes and Obesity

יום רביעי, 18 בדצמבר, 2013 • בית חיל האוויר, הרצליה

Wednesday, December 18, 2013 • Beit Hel HaAvir, Herzliya



הכנס השנתי 2013



Mice image: Courtesy of the Salk Institute for Biological Studies

מידע נוסף על פעולות הקרן באתר:

www.ehf.org.il

חפשו אותנו גם בפייסבוק 

הקרן לבריאות וסביבה (ע"ר)

רחוב רבקה 11, ירושלים 9346117

טל: 02-6738478 • פקס: 02-6749780

Pollutants, Diabetes and Obesity

8:30 Registration and Coffee

9:00 Greetings

Eddy Karnieli – President, Israel Endocrine Society

Ardon Rubinstein – Chairman, Israel Diabetes Association

Presentation of Grant Awards

Session 1

Chair: Karen Tordjman, Tel Aviv Sourasky Medical Center

9:30 Endocrine Disrupting Chemicals and the Metabolic Syndrome

Monica Lind, Uppsala University

10:10 Exposure to Endocrine Disrupting Chemicals in Israel

Sarit Caspi-Oron, Adam Teva v'Din

10:30 Diabetes in Israel - Trends and Gaps

Ofra Kalter-Leibovici, Gertner Institute

10:50 Coffee Break

11:20 Direct and Immune-Mediated Induction of Insulin Resistance and Adipose Stress Response by Nanoparticles

Assaf Rudich, Ben-Gurion University

11:40 Persistent Organic Pollutants (POPs) as Risk Factors for Diabetes

Lars Lind, Uppsala University

12:30 Lunch Break

Session 2

Chair: Rachel Dankner, Gertner Institute

13:30 Prenatal Obesogen Exposure Causes Transgenerational Inheritance of Increased Fat Mass, Stem Cell Programming and Hepatic Steatosis

Bruce Blumberg, University of California, Irvine

14:10 Obesity at a Young Age - The Epidemic of the Millennium

Shlomit Shalitin, Schneider Children's Medical Center

14:30 Epidemiological Studies of Exposure to Environmental Pollutants and Childhood Obesity

Maya Leventer-Roberts, Mount Sinai Medical School and Clalit Health Services

Hagai Levine, Hebrew University- Hadassah

14:50 Air Pollution and Diabetes

Joel Schwartz, Harvard University

15:30 Environmental Exposures, Diabetes and Obesity – Panel Discussion

Moderator: James Schauer, University of Wisconsin, Madison

Participants: Bruce Blumberg, Lars Lind, Monica Lind, Joel Schwartz

How strong is the evidence?

What are the research complexities and challenges?

What are the future priorities?

December 18, 2013, Beit Hel HaAvir, Herzliya